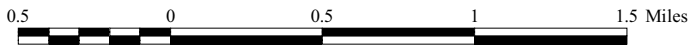







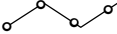
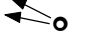


# Utilities and Community Resources

Town of Windham, Vt.

July 2007



1:40,000

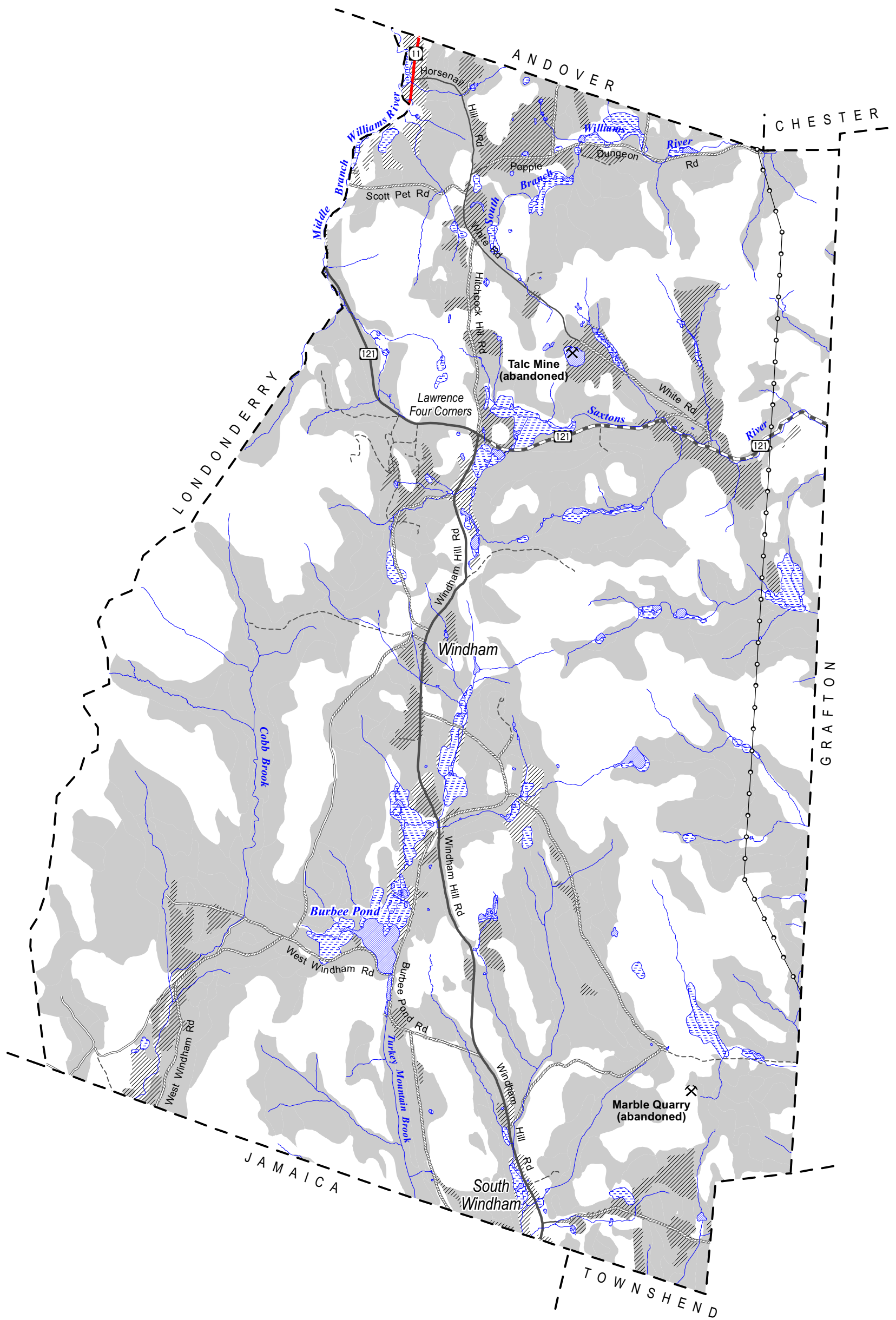
-  Cemetery
-  National Register Historic District (not actual extent)
-  Electric transmission line
-  Scenic view
-  Prominent ridgeline
-  100-foot contour (approximate)

Sources:

- Community Resources were identified by the Windham Planning Commission and data created by WRC GIS staff using 1:5000 orthophotos, 1:25,000 USGS topographic maps, and Windham's GIS parcel data.

Stream

Lake or pond



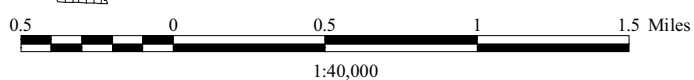
# Earth Resources Town of Windham, Vt. March 2006



- Mine/quarry
- Important farmland soil (see data notes)
- Soil with Forest Productivity Class of Site I (see data notes)
- Wetland
- Stream/river
- Pond

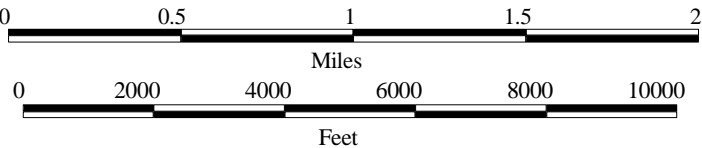
## Sources and data notes:

- Soil data are from VGIS data and are based on the Windham County Soil Survey.
- Forest productivity classes are based on the productivity of the land for forestry. Each class includes a range of potential productivity per acre per year. Site I soils are the most productive at greater than 85 cubic feet per acre per year.
- Important farmland soil delineations are derived from soils data. These soils qualify as Primary Agricultural Soils under Act 250.





# Town of Windham, Vermont Watersheds



Watershed boundary

West River watersheds:

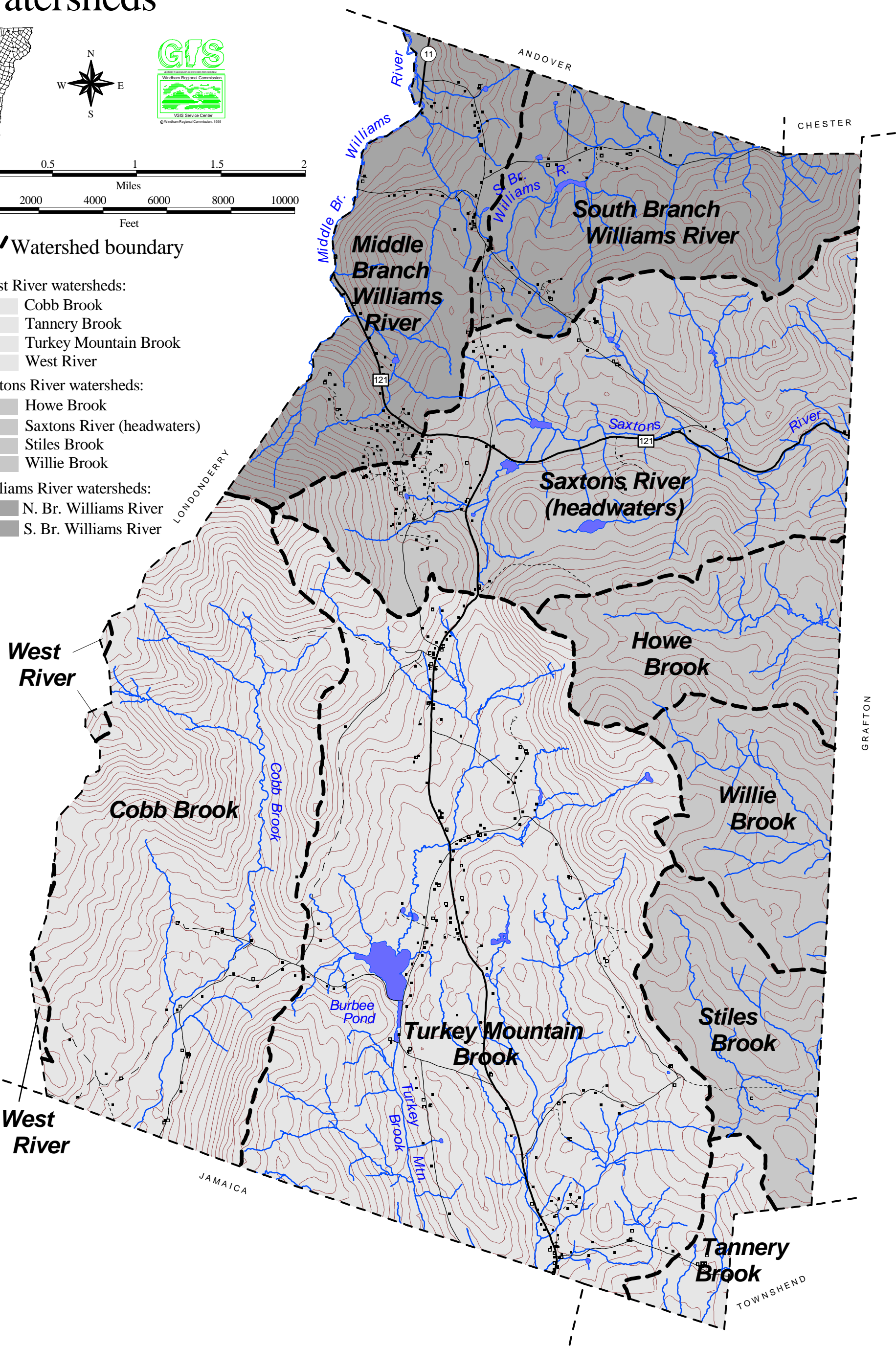
- Cobb Brook
- Tannery Brook
- Turkey Mountain Brook
- West River

Saxtons River watersheds:

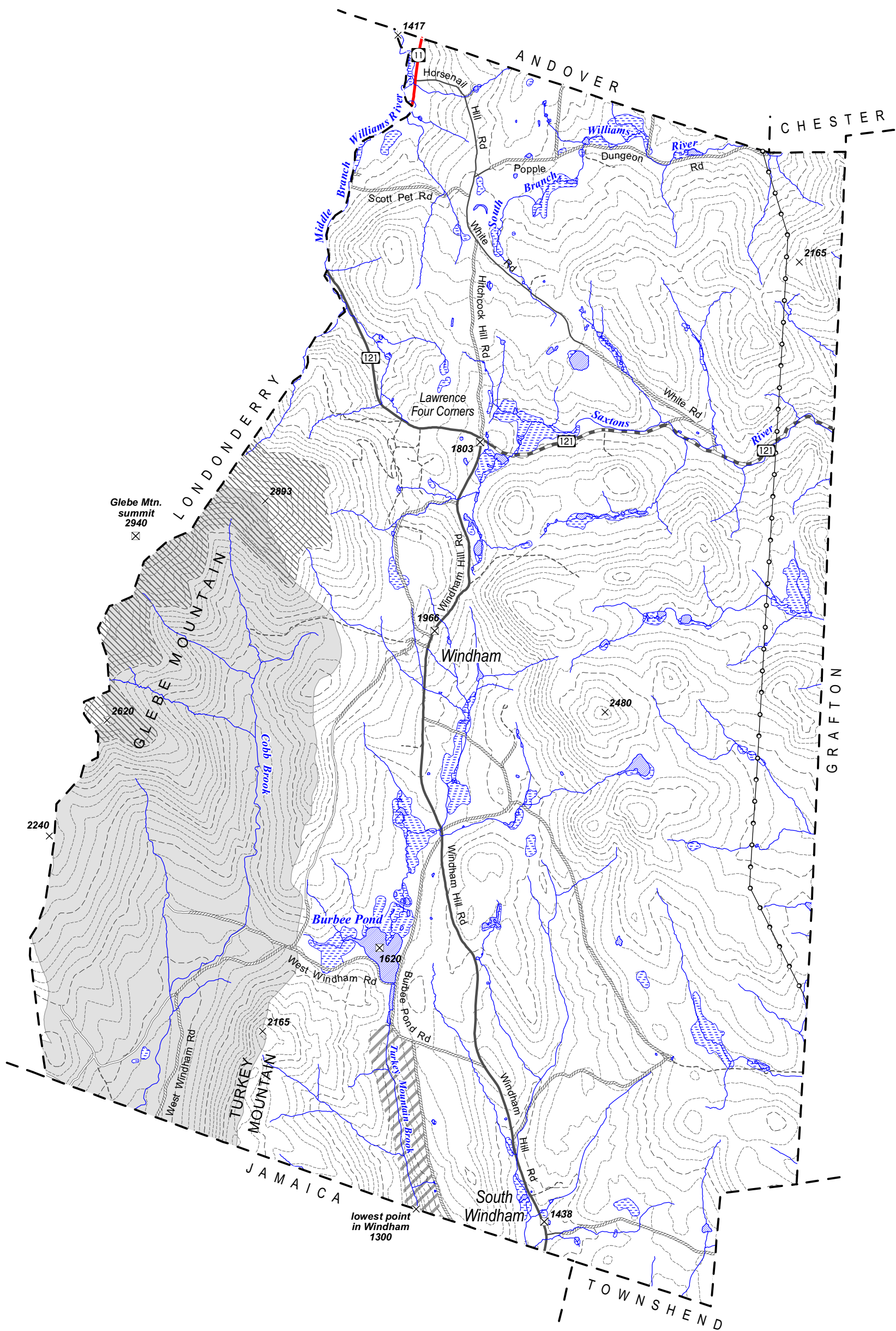
- Howe Brook
- Saxtons River (headwaters)
- Stiles Brook
- Willie Brook

Williams River watersheds:

- N. Br. Williams River
- S. Br. Williams River







# Natural Resources

## Town of Windham, Vt.

March 2006



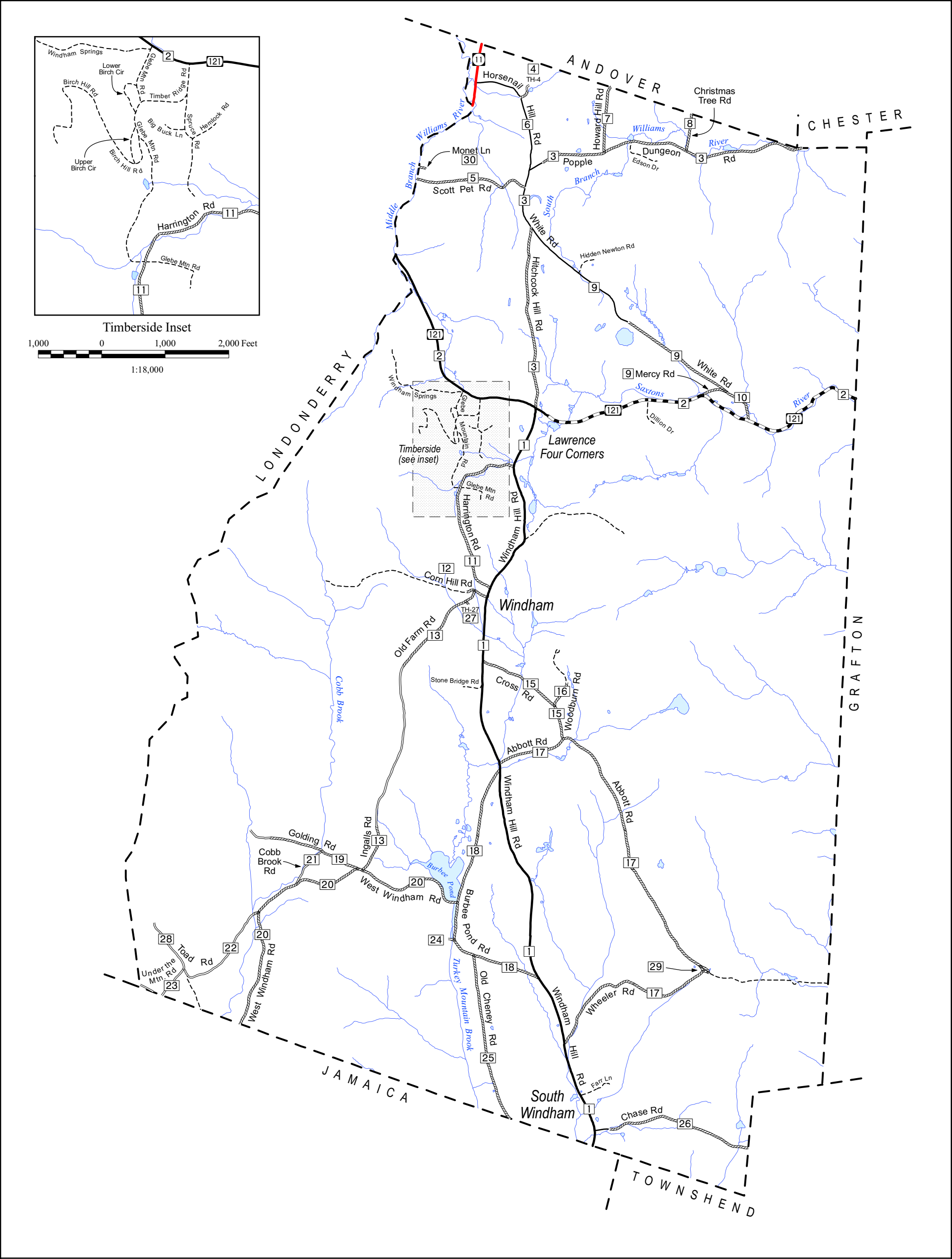
139 Main St • Suite 505 • Brattleboro, VT 05301  
(802) 257-4547 [www.windhamregional.org](http://www.windhamregional.org)



- 1803 x Bench mark or spot elevation in feet
- 2480 x Elevation in feet, approximate (within 20 feet)
- 50-foot contour (approximate)
- Land over 2500 feet elevation
- Deer wintering area
- Class A(1) watershed (Cobb Brook)
- Wetland
- Stream/river
- Pond

### Sources:

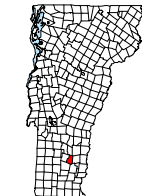
- Surface waters are from the Vermont Hydrography Dataset (VGIS data layer SWnnnnnnnn).
- The watershed of Cobb Brook is classified as a Class A watershed by VT ANR, Division of Water Quality. The watershed boundary was delineated and digitized by WRC staff using 1:25,000 USGS topographic maps.
- The wetlands shown are those included in the Vermont Significant Wetlands Inventory (VGIS data layer VSWI), which depicts the approximate locations of wetlands that are generally 3 acres or larger in size.
- Deer wintering areas are taken from the VGIS data layer DEERWN released in April 1997.
- Lands over 2500 feet in elevation were digitized by VT ANR from 1:24000 USGS topographic maps.
- Contour lines were generated from USGS 1:24000 Digital Elevation Models by WRC. They are intended to portray the general hypsography of the area and should not be used to determine actual elevations.



# Transportation System

## Town of Windham, Vt.

March 2006



139 Main St • Suite 505 • Brattleboro, VT 05301  
(802) 257-4547 [www.windhamregional.org](http://www.windhamregional.org)



- State highway (paved)
- Class 2 town highway - paved
- Class 2 town highway - unpaved
- Class 3 town highway - paved
- Class 3 town highway - unpaved
- Class 4 town highway (unpaved)
- Town highway number
- Private road/drive
- Streams
- Lake or pond

Note: class 4 town highways may be impassable to automobiles

### Sources:

- Town highway data are from Vt. Agency of Transportation sources (VGIS data layer RDSnnnnn) and were developed by digitizing 1989 1:5000 orthophotos and from GPS data collection for Enhanced 9-1-1. Data were corrected by WRC GIS staff in 2003 using digital orthophotos and information provided by officials from the Town of Windham.

- Surface waters are from the Vermont Hydrography Dataset (VGIS data layer SWnnnnnnn). The dataset was generated at a scale of 1:5000 and was developed using digital orthophotos, topographic maps, color infra-red aerial photography and other ancillary data sources.

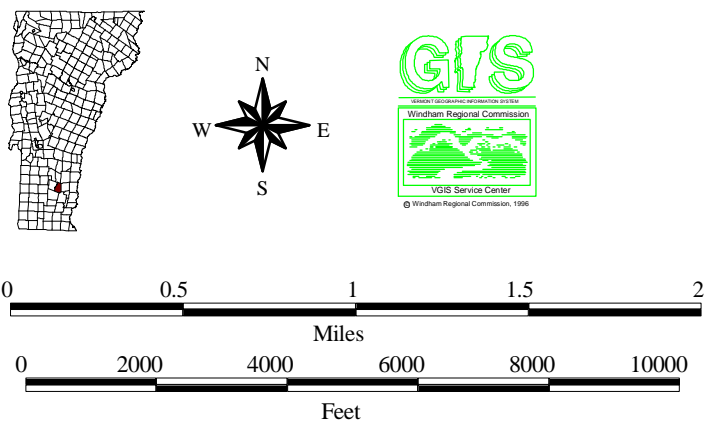
0.5 0 0.5 1 1.5 Miles  
1:40,000



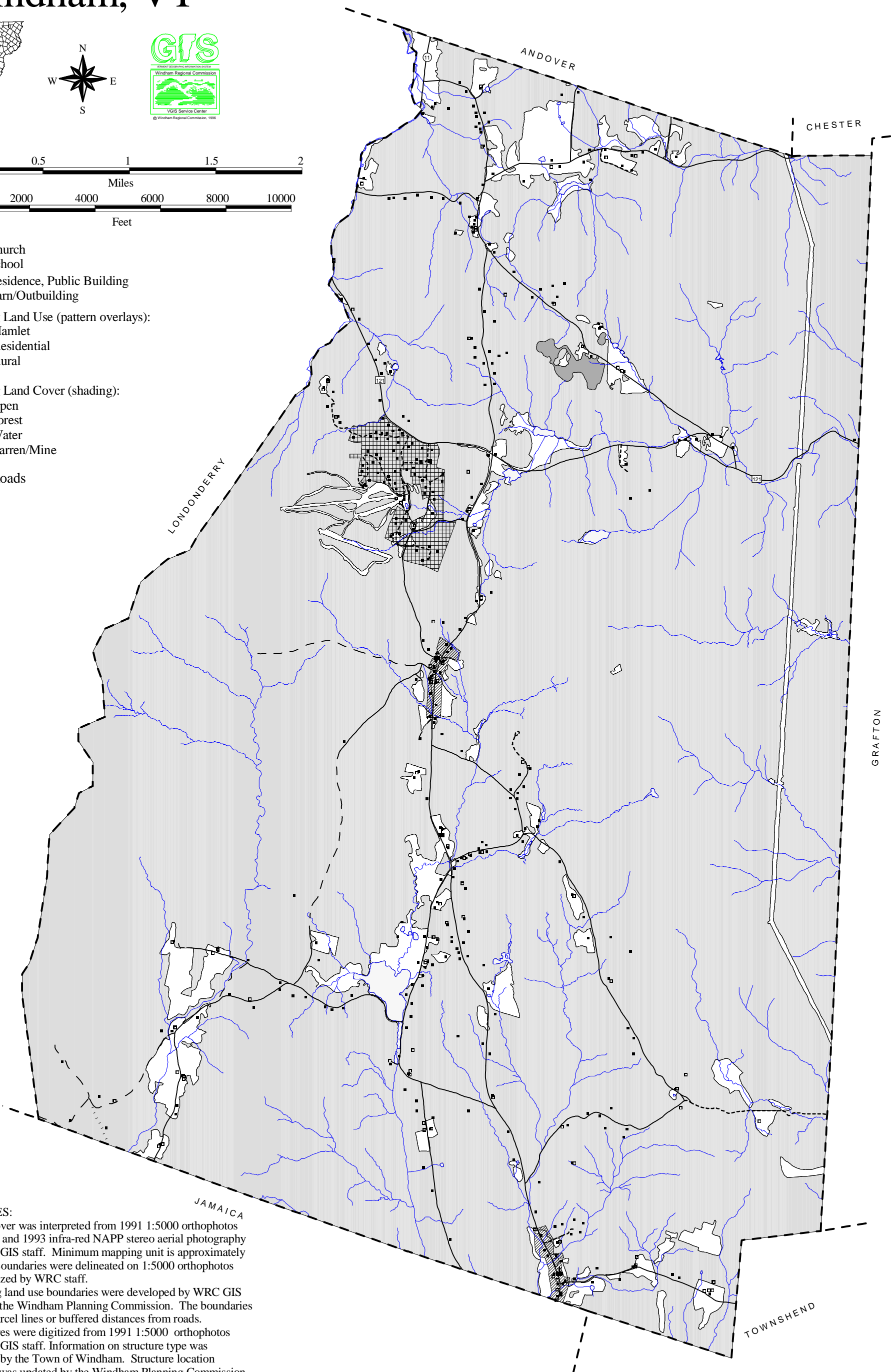
# Existing Land Use/Land Cover

## Windham, VT

NOTES:  
- This map should be used for planning purposes and general reference only.  
- A large scale color version of this map is available at the Windham Town Office.

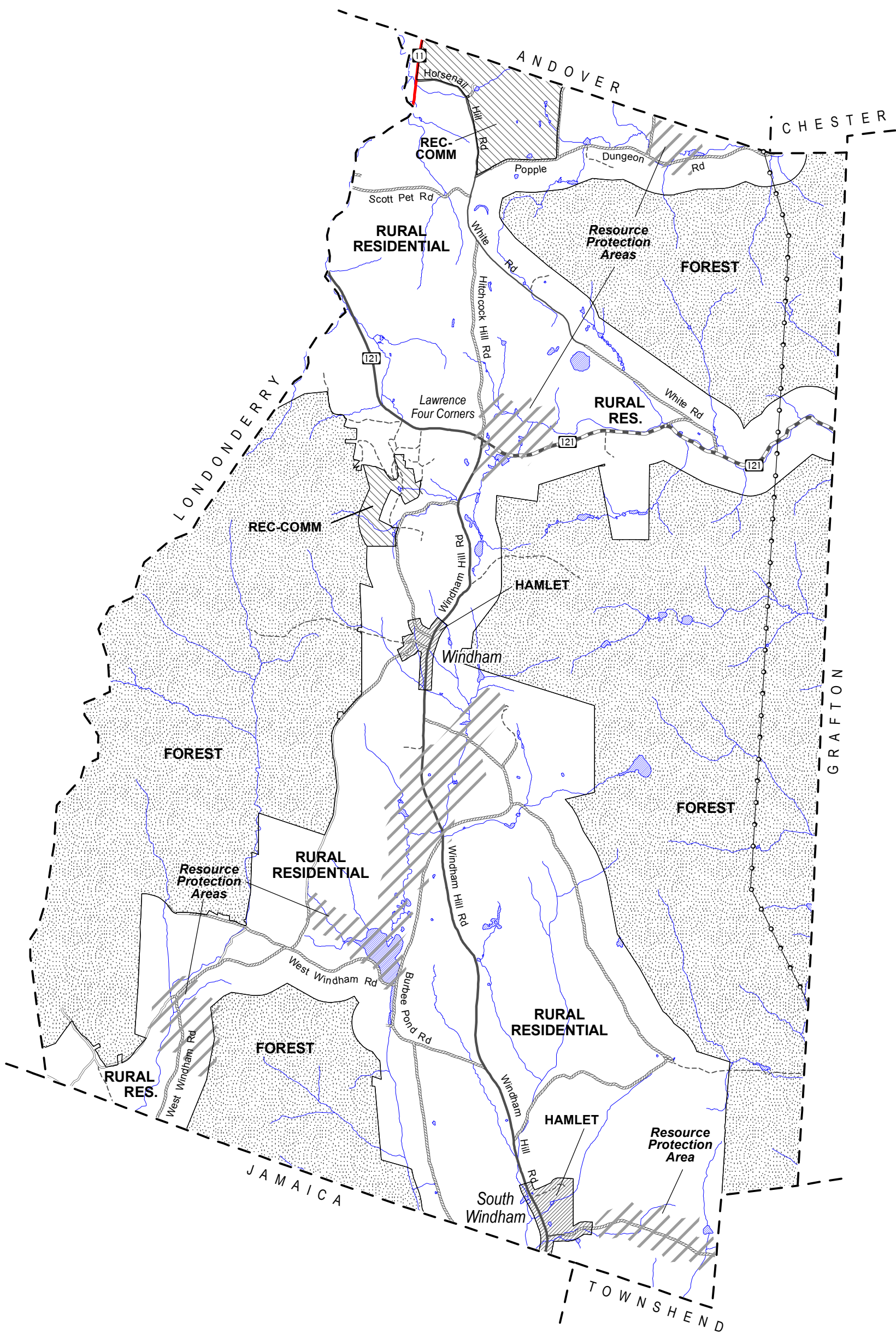


- Church
  - School
  - Residence, Public Building
  - Barn/Outbuilding
- Existing Land Use (pattern overlays):
- Hamlet
  - Residential
  - Rural
- Existing Land Cover (shading):
- Open
  - Forest
  - Water
  - Barren/Mine
- Roads





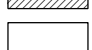

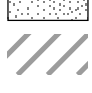
SOURCES:

- Land cover was interpreted from 1991 1:5000 orthophotos and 1992 and 1993 infra-red NAPP stereo aerial photography by WRC GIS staff. Minimum mapping unit is approximately 1 acre. Boundaries were delineated on 1:5000 orthophotos and digitized by WRC staff.
- Existing land use boundaries were developed by WRC GIS staff and the Windham Planning Commission. The boundaries follow parcel lines or buffered distances from roads.
- Structures were digitized from 1991 1:5000 orthophotos by WRC GIS staff. Information on structure type was provided by the Town of Windham. Structure location and type was updated by the Windham Planning Commission in 1996. The location of new structures is approximate.



# Future Land Use Areas Town of Windham, Vt. March 2006



-  Recreation-Commercial
-  Hamlet
-  Rural Residential
-  Forest
-  Resource Protection Area overlay

Sources:

- Future land use areas were designated by the Town of Windham.  
Data were created by WRC using existing roads and parcel data..

0.5 0 0.5 1 1.5 Miles  
1:40,000