

Town of Windham
Possible Constraints for
Energy Generation *

Map 1 of 2

- Hydic Soils
- FEMA Special Flood Hazard Areas
- Protected lands (state fee lands and private conservation lands)
- Deer Wintering Areas
- Vermont Conservation Design Highest Priority Forest Blocks

*all possible constraints except
ag soils and mitigation areas shown;
ag soils and mitigation areas on Map 2*

Some features are shown slightly larger than their actual size
to improve visibility on this small-scale map.

* - as defined by Vermont's Act 174

0 0.5 1 2 Miles

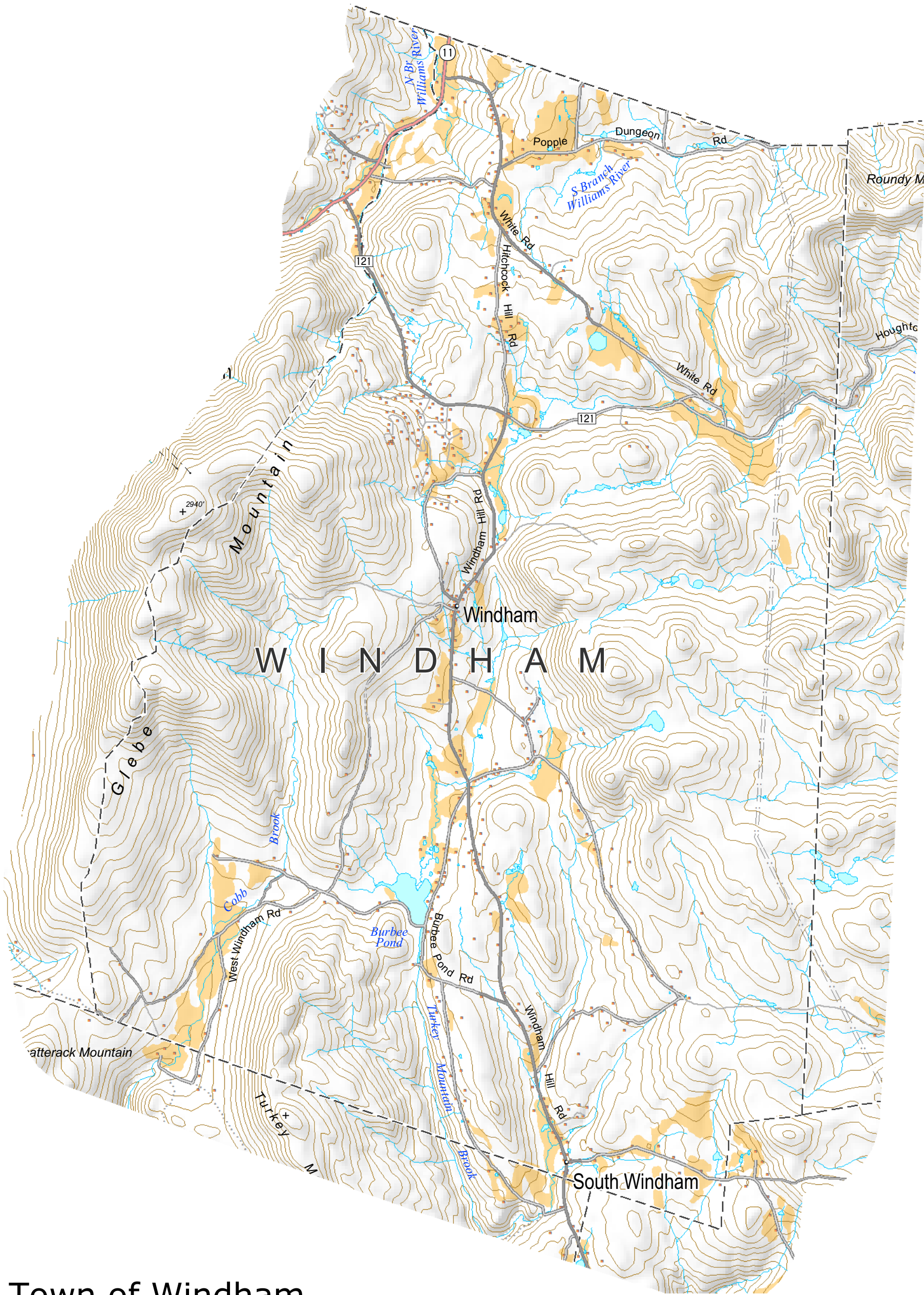
5 acres

10 acres

50 acres

100 acres

April 2017



Town of Windham
Possible Constraints for
Energy Generation *

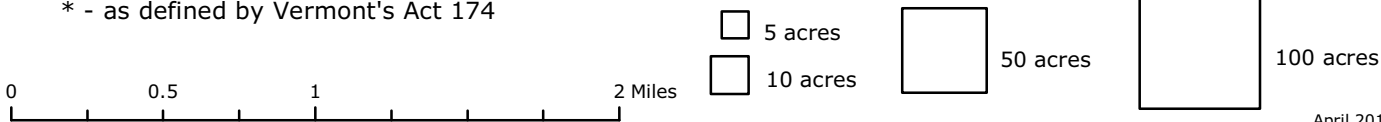
*only ag soils and mitigation areas shown;
all other possible constraints are shown
on Map 1*

Map 2 of 2

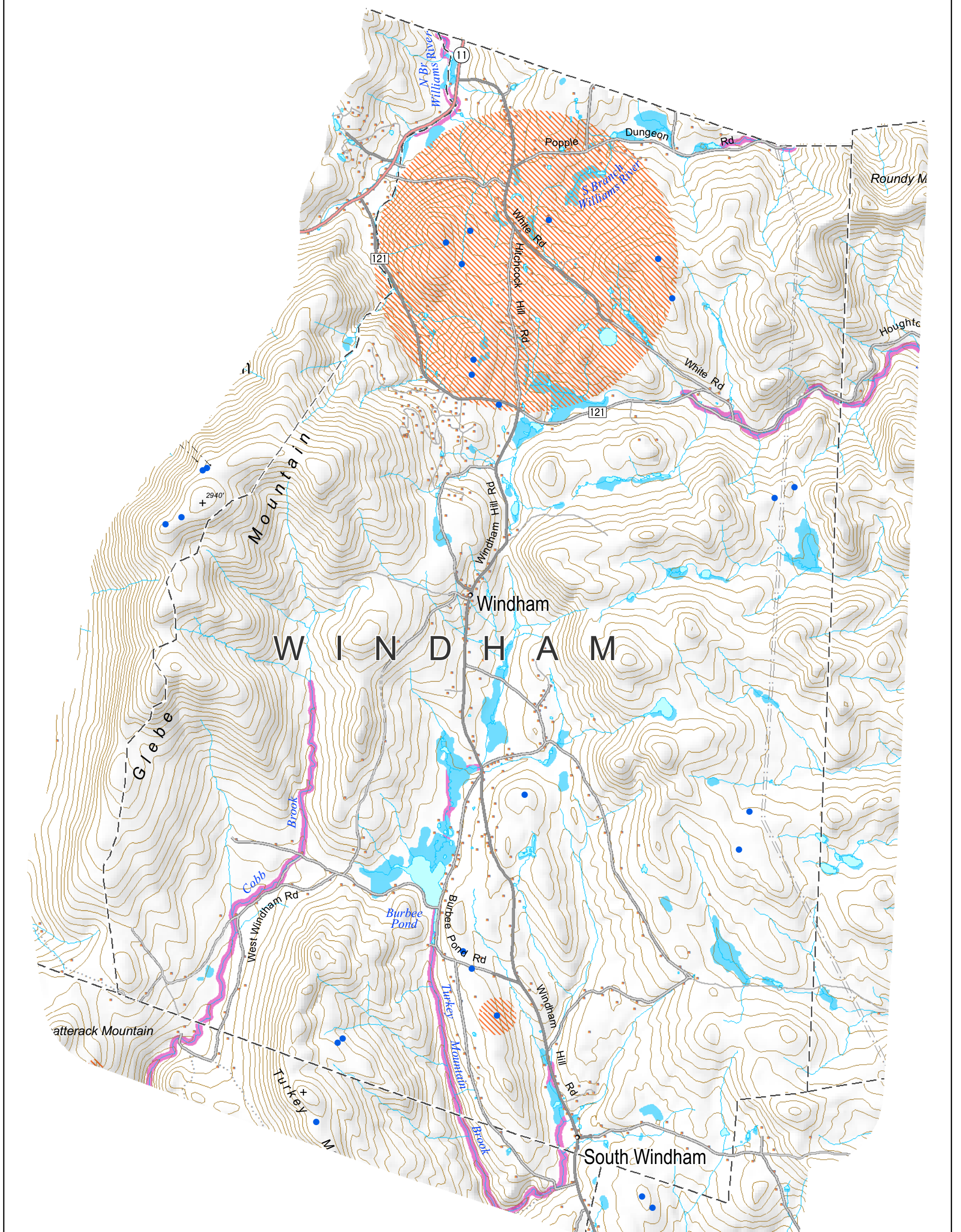
- Agricultural Soils
- Act 250 Agricultural Soil Mitigation Areas

Some features are shown slightly larger than their actual size
to improve visibility on this small-scale map.

* - as defined by Vermont's Act 174



April 2017



Town of Windham Known Constraints for Energy Generation *

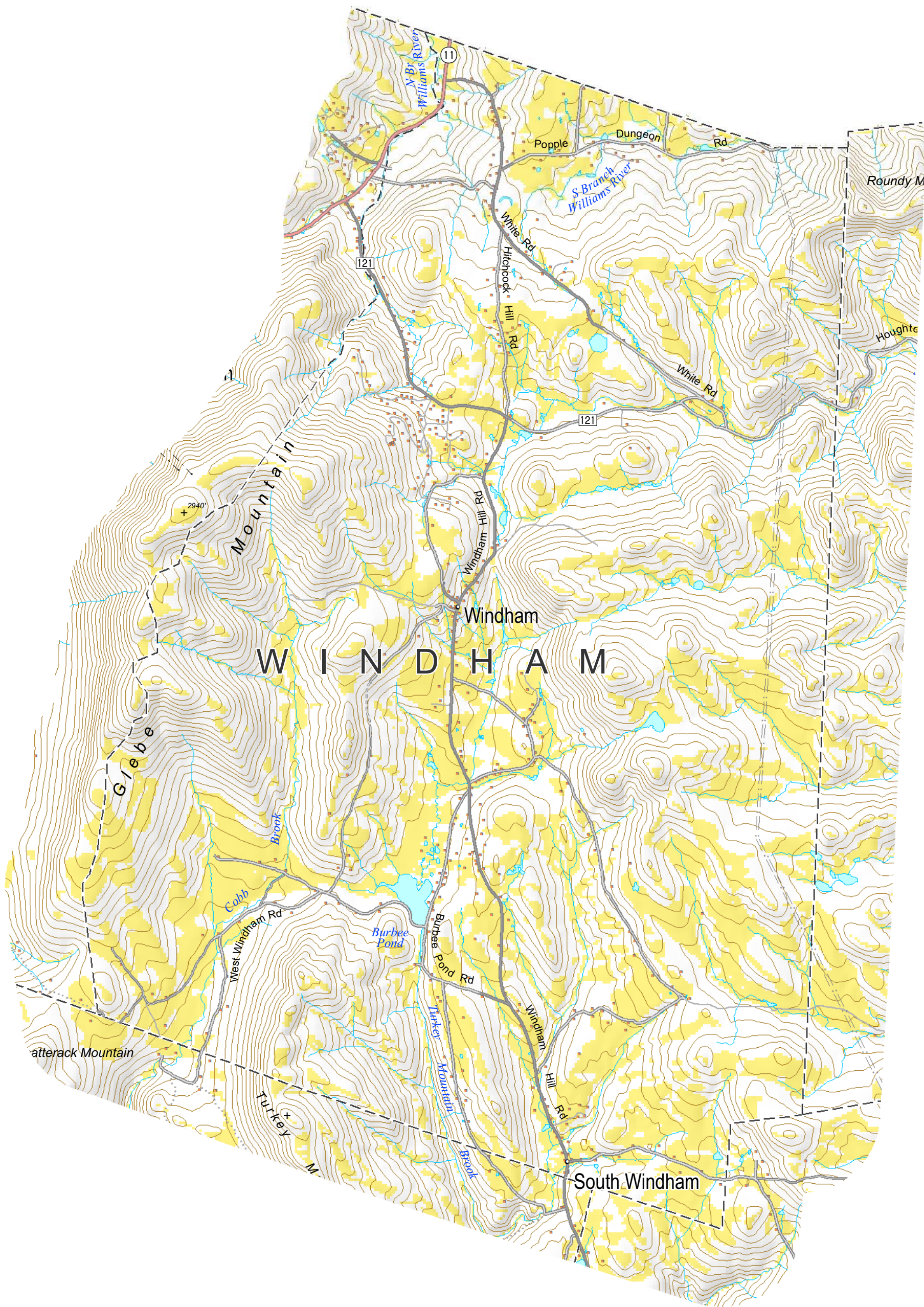
- Vernal Pools
 - Class 1 and 2 Wetlands, VSWI
 - DEC River Corridors and/or FEMA Floodways
 - National Wilderness Areas
 - State-significant Natural Communities and Rare, Threatened, and Endangered species
- Some features are shown slightly larger than their actual size to improve visibility on this small-scale map.




* - as defined by Vermont's Act 174



April 2017



Town of Windham Solar Resource

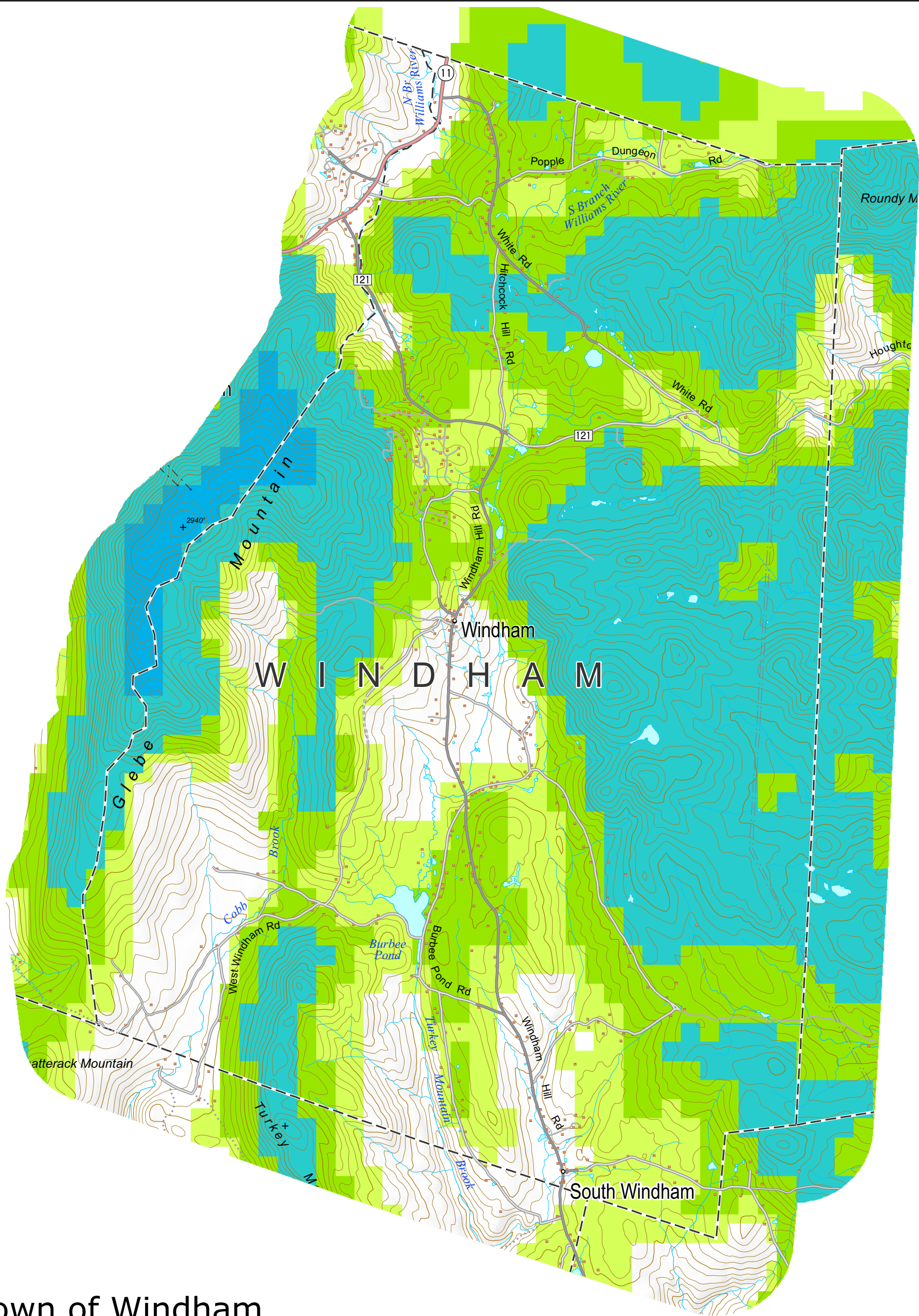
 Solar radiation generally suitable for generation
determined by identifying areas with appropriate aspect,
and excluding sites too steep for development (> 15% slope)

 5 acres
 10 acres
 50 acres
 100 acres

- The actual raw solar data used by the State of Vermont in their Act 174 analysis has not yet been released to the public (though the final, post-analysis data has).
- The data on this map were developed by WRC using similar criteria, and until the actual raw data is released to the public, the data on this map will serve as a proxy.

April 2017

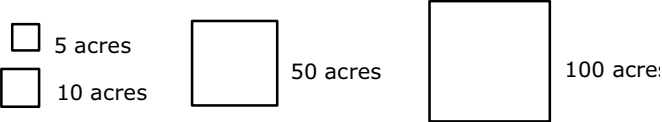
0 0.5 1 2 Miles



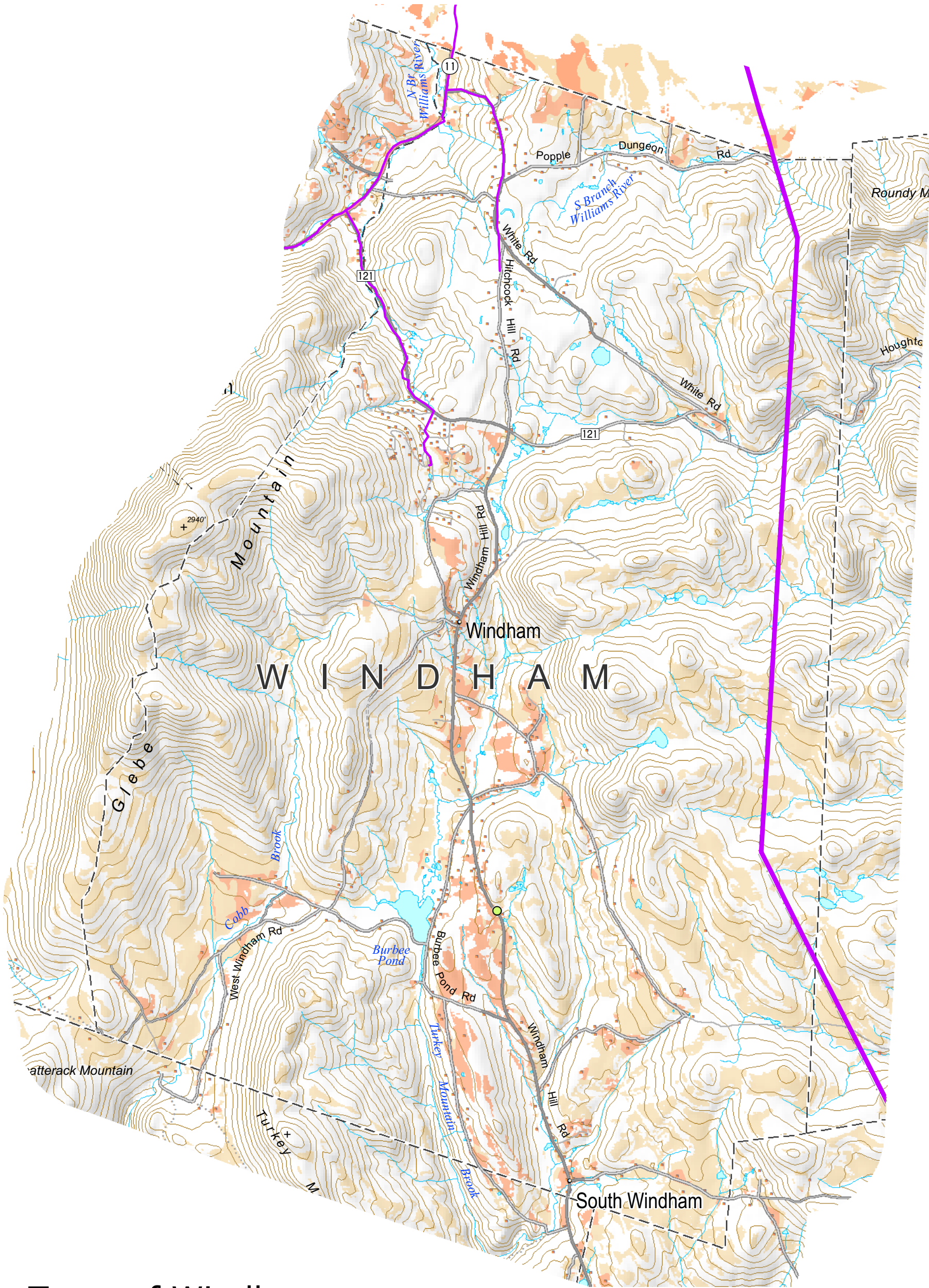
Town of Windham Wind Resource

- Generally suitable wind for residential generation
- Generally suitable wind for small scale commercial generation (along with residential generation)
- Generally suitable wind for large scale commercial generation (along with residential and small scale commercial) darker color = higher wind speed

- The actual raw wind data used by the State of Vermont in their Act 174 analysis has not yet been released to the public (though the final, post-analysis data has).
- The data on this map are very similar to that actual raw data, and until the actual raw data is released to the public, the data on this map will serve as a proxy.



April 2017

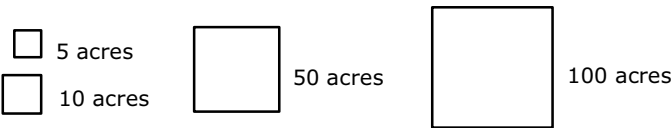


Town of Windham Solar Energy Potential

- Prime Solar Energy Resource**
generally adequate solar resources and no identified constraints
(i.e., no "known" and no "possible" constraints)
- Secondary Solar Energy Resource**
generally adequate solar resources and no "known" constraints,
but at least one "possible" constraint

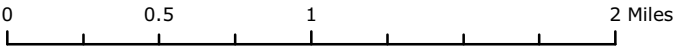
"known" and "possible" constraints are identified
by the Vt. Public Service Department in their
Act 174 Energy Planning Standards
**Note: prime vs. secondary solar energy
resource is NOT based on solar intensity.**

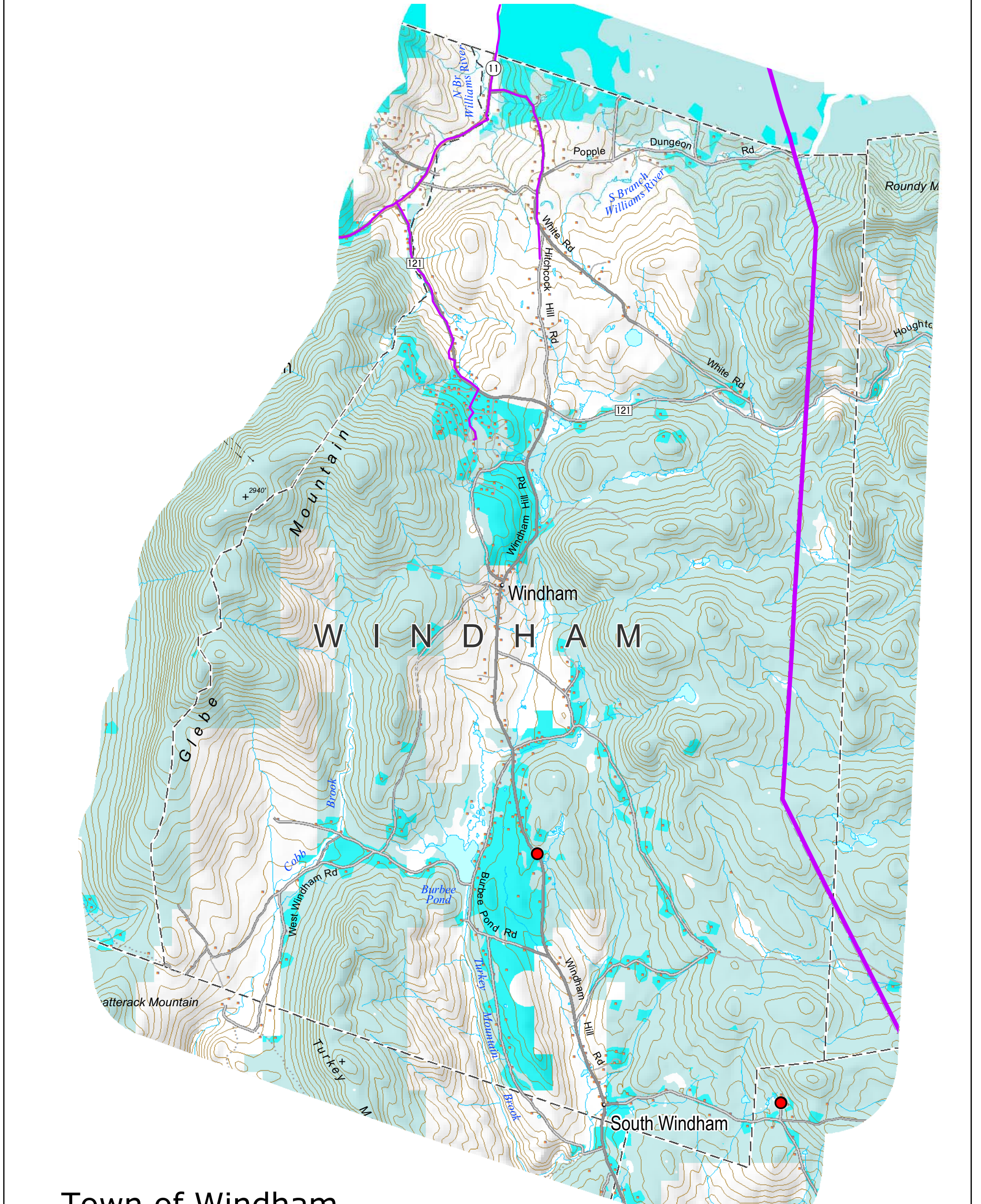
- Existing solar installations:
- 1 - 19 kW (generally smaller-scale on-site:
residence, farm, school, or business)
 - 20 - 70 kW
 - 140 - 150 kW (generally larger-scale
commercial/utility solar farms)
 - 360 - 2000 kW
- Existing solar installations from the Vermont Energy Atlas, developed
from Certificates of Public Good; they may correspond to the address of
the certificate holder and not the actual location of the installation.





- Substations
- 3 Phase Power Lines
- Transmission Lines

April 2017








Town of Windham Wind Energy Potential

-  **Prime Wind Energy Resource**
generally adequate wind resources and no identified constraints (i.e., no "known" and no "possible" constraints)
-  **Secondary Wind Energy Resource**
generally adequate wind resources and no "known" constraints, but at least one "possible" constraint




"known" and "possible" constraints are identified by the Vt Public Service Department in their Act 174 Energy Planning Standards

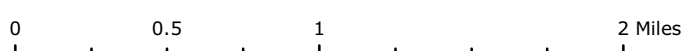
Note: prime vs. secondary wind energy resource is NOT based on wind speed.



-  Existing Small Wind
-  Existing Commercial Wind
-  Commercial Wind In Development

Existing wind from the Vermont Energy Atlas, developed from Certificates of Public Good. They may correspond to the address of the certificate holder and not the actual location of the installation.

-  Substations
-  3 Phase Power Lines
-  Transmission Lines



April 2017