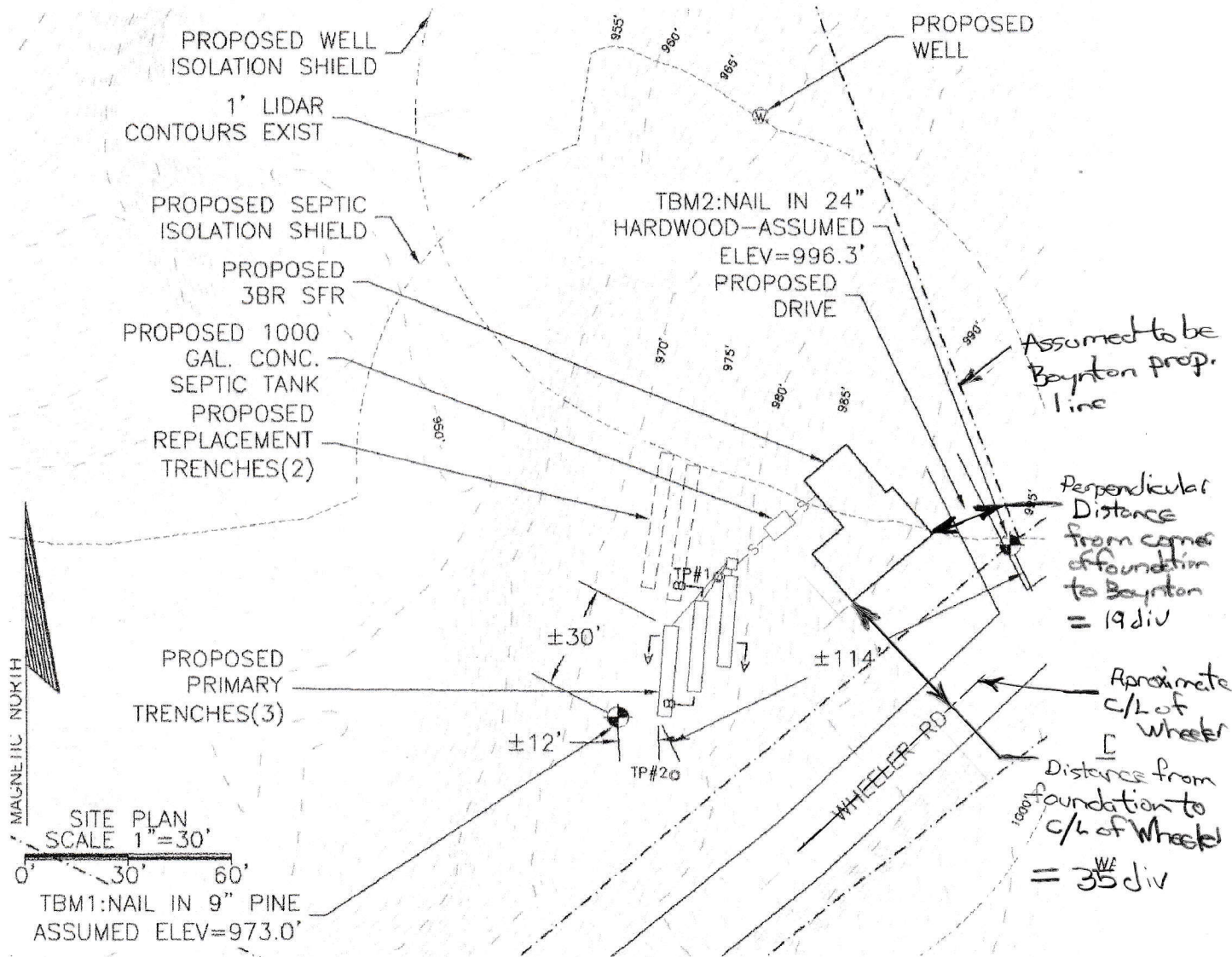


Zoomed Portion of the House Site Wastewater Plan Submitted to and Approved by ANR



Engineering Scale Used: 40 divisions per inch

51 div = 60'

① Distance from foundation to Wheeler Road Centerline = 35 div

$$\therefore \frac{60'}{51 \text{ div}} = \frac{X_1}{35 \text{ div}}$$

$$X_1 = 41.2 \text{ ft}$$

Setback requirement = 65'

② Distance from corner of foundation to Boynton property line = 19 div

$$\therefore \frac{60'}{51 \text{ div}} = \frac{X_2}{19 \text{ div}}$$

$$X_2 = 22.4 \text{ ft}$$

Setback requirement = 25'

Measurements performed by Philip L. McDuffie 11 JULY 2022 *PKM*